



Westleton Common Annual Report 2021



WESTLETON COMMON ANNUAL REPORT 2021

Contents

Review of the Year

Ron Strowger Tribute

Westleton Common Advisory Group Members

Westleton Common; Compartment Plan

Programme 2021

Working Party Notes

Nature Walks and other Observations

Dash Astro

Fungi

Reptiles

Moths

Safety Audit

GeoSuffolk Report

APPENDIX - 2021 Records:

Silver Studded Blue Butterflies

Fungi

Moths

Reptiles

Insects

Birds

Wildflowers and other plants

Annual Report 2021 – Review of the Year

Just like last year 2021 was dominated by the continuing Covid-19 pandemic and the consequent restrictions on all our activities. The year began with a, Covid-induced, disappointment – the bonfire and fireworks due to be held on New Year's Day had to be cancelled.

Another disappointment was the resignation of Arlette Smith from the Advisory Group. Arlette had chaired the group for several years and was appreciated for her pragmatic and sensible leadership and her, sometimes necessary, forceful management of the meetings. We will miss her. Joyce Burtenshaw joined the group. She brings with her a lot of knowledge and understanding of wild plants and has previous experience in conservation work and the promotion of biodiversity. She is already having a significant impact and we are confident this will continue.

Joyce is one of the leaders of the local Health Walk programme which has sometimes included Westleton Common in their walks. Three of the Health Walks took place on the common and there was great excitement when they saw the bee orchids in June (*see Juliet Bullimore's notes under "Nature Walks and Other Observations"*). They hope to organise more walks crossing the common in 2022.

Tragically Ronnie Strowger, a long-term friend of, and lifelong resident on, the common died towards the end of the year. An appreciation of Ronnie by Alison Paul and Juliet Bullimore is included in this report.

The Common Advisory Group was able to meet five times during the year (one "meeting" was conducted by email but the remaining four were "live") and good progress was made.

GeoSuffolk carried out a geological survey of the common in October. Their report is included. They give advice on work that would help ensure that geological features are accessible. We intend to follow that advice.

As was the case in 2020, Covid-19 restrictions and a reorganisation of the probation service meant that the Community Payback teams were not available this year. The organisers of the scheme told us that, following their transfer back to the unified probation service, their roles have yet to be defined and they are unsure if and how they can continue supporting local communities like ours. It is important that Westleton Parish Council keeps the Common Management Plan on schedule. To this end contractors have been appointed to do clearance work near Ralph's Mill and on the Noddle. This work is expected to start in January 2022. The cost can be covered by the DEFRA High Level Stewardship Grant.

Working Parties took place on four Saturday mornings during 2021, see later in this report for details of the work done. The planned maintenance work on the common is largely on schedule, but more help on the Saturday working parties would, as always, be very welcome.

Five Nature Walks were held during the year (a considerable improvement on the mere two in 2020!). Juliet Bullimore gives a full account of these and of other observations later in this report.

Discussions about the emergency access to the common continued (*see the review of the year in the 2020 annual report and the minutes of the Advisory Group meetings on the Westleton website - [Advisory Group Meetings » Westleton \(onesuffolk.net\)](https://onesuffolk.net)*). The advisory group presented its advice to Westleton Parish Council in October 2021. This advice was accepted, and the parish council intends to implement these proposals. In our review of 2020 we commented that;

“This issue has been raised in the past and has caused considerable local concern. The Common Advisory Group believes that it is important to involve the local community and take full account of any concerns raised.”

The advisory group felt it would be unwise and inappropriate to hold public meetings to discuss these proposals because of the concerns about Covid-19 and the need to follow the restrictions. The discussions about these proposals, and the advice given to the parish council, have all been recorded in the minutes of the advisory group meetings which are available for all to read on the Westleton website. The advice has also been published in the parish council minutes and displayed on the parish council notice board. In addition, the advice is also reproduced here;

Westleton Common Advisory Group

To Ian Haines
Clerk to Westleton Parish Council
From John Bebbington
Westleton Common Advisory Group
By email
24/10/2021

Dear Ian

Emergency Access to Westleton Common

At our meeting on Wednesday 20/10/2021 the Westleton Common Advisory Group agreed to offer this advice to Westleton Parish Council.

The two wooden posts on the footpath leading from the storage container and parking area on Mill Street onto the Common should be replaced with secure drop-down posts in the same position. These posts should be lockable with the access key kept in a secure cabinet mounted at the entrance to the path. The code to the key cabinet should be issued to the emergency services only (Suffolk Fire and Rescue and East of England Ambulance Service). This code should not be available to the general public. The locks on the posts should be of a design that can be cut with bolt cutters if the first emergency vehicle on site does not have access to the code to the key cabinet.

The vegetation adjacent to the path should not be cut back and the path should not be widened.

In the event of an emergency the posts can be opened either with a key or by cutting the locks and the emergency vehicle can drive through the undergrowth onto the common.

It will be necessary to ensure that the vegetation does not become so dense as to inhibit the emergency access; this would be done as part of normal maintenance in line with the management plan.

The advantages of this approach are;

Existing width restriction is maintained.

No disturbance of habitat.

No interference with existing management plan.

Access by large vehicles would only be required in an emergency so non-emergency access is inhibited.

The bund leading from the rear of the concrete pad onto the path leading to Black Slough should be levelled in line with the advice from Suffolk Fire and Rescue to facilitate access to the rest of the Common by emergency vehicles. All soils resulting from this levelling should be redistributed on the common so that the seed bank can rejuvenate.

All that is proposed is that two existing posts are replaced with others effectively doing the same job in the same location and that a soil bund is levelled and the resultant soil redistributed on the common. We should notify Natural England, Suffolk Wildlife Trust, The Department of the Environment, Food and Rural Affairs and Rural Payments Agency of these proposals before the work is commenced. In our view they are unlikely to find them unacceptable.

Previous proposals to widen this path to facilitate easier emergency access have caused significant concerns and distress among many people who live in Westleton and who value the Common. In our view these proposals do not significantly alter the path and will not make unauthorised access more likely but will be of value in the event of an emergency. Nevertheless, it is important to consult the wider community before any work is undertaken.

Regards

John

John Bebbington

Westleton Common Advisory Group

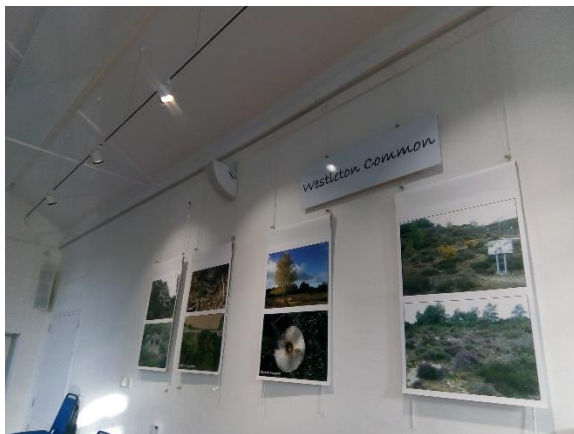
We hope that this has given a sufficient explanation of what is proposed and that there has been sufficient opportunity to comment. We are confident that this policy will not permit additional vehicle access to the common or adversely affect habitat. We have put these proposals to the

Suffolk Wildlife Trust, Natural England and DEFRA/Rural Payments Agency and they have raised no objections.

The Management Plan for the period 2013 to 2023 is due to be updated. We have begun to rewrite the plan and will be holding discussions with the Suffolk Wildlife Trust and Natural England during the early part of 2022.

The Covid-19 restrictions and some personal health issues did mean that some of the wildlife surveys were less complete than hoped. We are very grateful to the people who did formal and informal surveys and for sending their reports, which are included in this report. So, thank you David Rous, Neil Mahler, Clive Ireland and his colleagues in the Westleton Moth Group, Richard Drew, Juliet Bullimore, Sheila Francis and Joyce Burtenshaw.

Roy Jones and John Bebbington moved the display of photographs of the common from the village hall foyer to the main room in the hall. This allowed other exhibitions to be held in the foyer and also allowed all the common photos to be displayed. Annie Groves, the Village Hall Manager reported that users of the hall are “delighted to see something different and local on display in the main hall”.



Annie Groves



Annie Groves

We are very grateful to everyone who helped with the management of the Common during the year.

We thank all the people who helped with the working parties and are grateful to Pam and Alan Hargreaves for providing the much-needed refreshments.

Several people contributed to and are credited in this report. We are very grateful for their help.

We are grateful to the people who took the photographs that enliven this report and their permission to use them; David Rous, Neil Mahler, Clive Ireland, Juliet Bullimore, Annie Groves, Ann Bebbington, Jim Slight, John Shepherd and John Bebbington (working parties).

Juliet Bullimore helped with much of the organisation and publicity and made some valuable contributions to this report, including the cover photo.

Our thanks to them all.

Westleton Common Advisory Group
January 2022

Ron Strowger 1934 - 2021

(Alison Paul and Juliet Bullimore)

Ron Strowger was born in the house his grandfather built, the third generation of his family to be living on the Common. His early memories revolved round the time of the army's occupation of the land, as they set up camp all around the house, but his father fiercely and successfully resisted having the house itself taken over. This ignited Ron's interest in the history of the Common, which he shared with the village for the rest of his life. He collected many artefacts and munition fragments and put a forbidding notice on his gate warning of the danger beyond it.

Ron (known to all as Ronnie) greatly enjoyed sharing his knowledge and had many a fascinating discussion with people he met on his walks. He was struck by the profound changes in the landscape, as in his childhood there were hardly any trees on the Common, thanks to rabbit activity, and to the annual burning of the gorse by the children. In the days of the active gravel workings, the pit was full of hazards - like getting stuck in the quicksand of the gravel washing ponds.

After the village purchased the Common in 2003, there were opportunities to explore the historical features still evident there, such as spoil heaps, sandy cliffs, concrete bases and the washing ponds. Ronnie contributed many photographs and items to the Village Archives, and gave very popular lectures in the Village Hall, as well as guided walks on the common. He was one of the great village treasures and his presence is much missed.



Ronnie giving an historical tour of the Common in 2010

(The then Village Archivist, Ann Follows, interviewed Ronnie in 2007 and created an illustrated account to accompany the voice CD recording. These are available in the village archives from Dilys Hall dilyshall@yahoo.co.uk)

Westleton Common Advisory Group 2021

Nick Shearme Chairman and Bonfire Group Chair
email: nick@gardenend.co.uk

Westleton Parish Council

John Bebbington Secretary
email: johnannbebbington@outlook.com

David Rous Work Party Leader
email: David126754@outlook.com

Julian Alexander

Westleton Parish Council

Roy Jones

Arlette Smith (*to July 2021*)

Joyce Burtenshaw (*from July 2021*)

Amanda Freeman

Westleton Parish Council

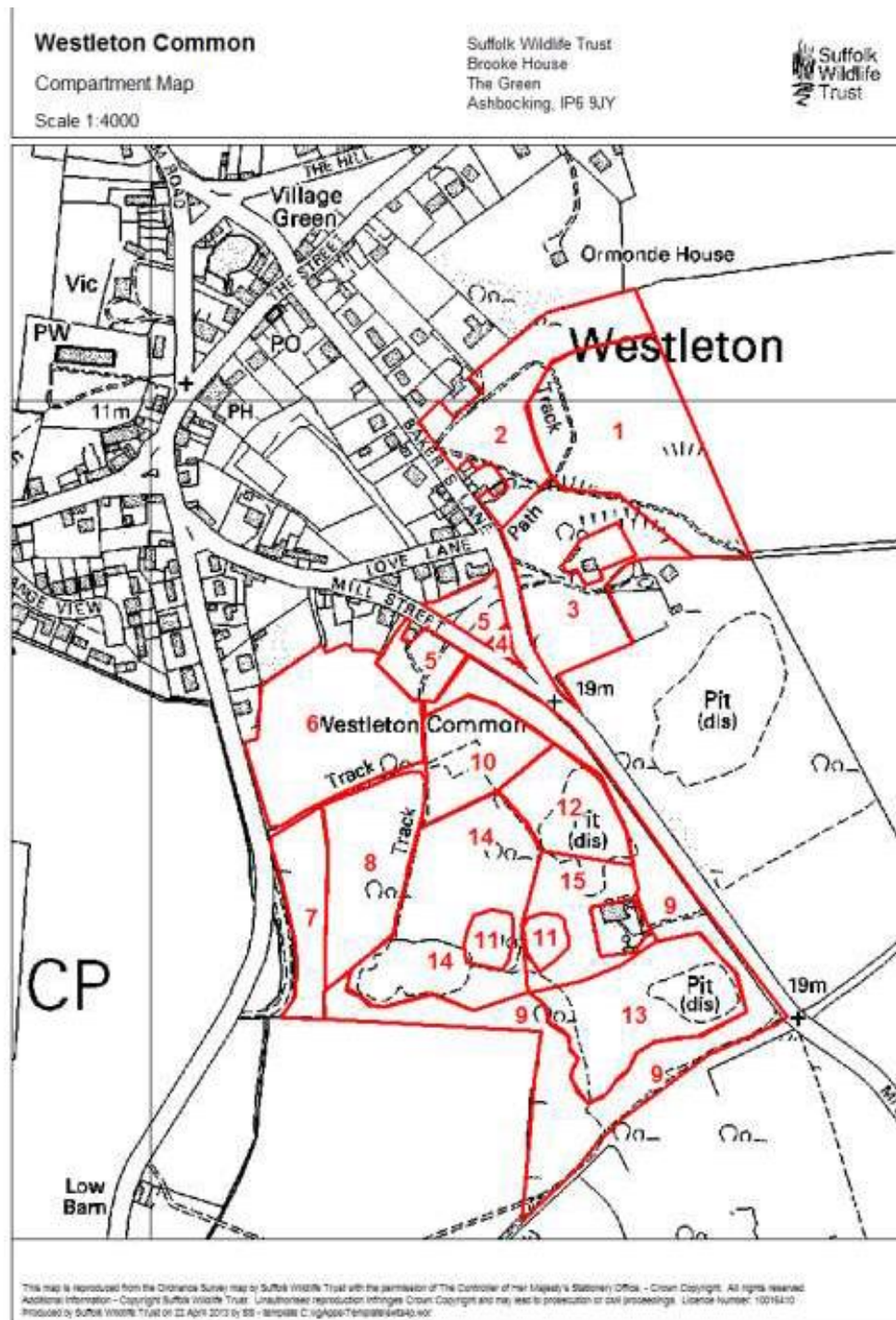
Chris Freeman

Westleton Parish Council

Andrew Turner

Westleton Parish Council

Westleton Common; Compartment Plan



WESTLETON COMMON PROGRAMME 2021

New Year's Day Bonfire and Fireworks

Unfortunately, the Bonfire and Fireworks had to be cancelled this year because of the Covid-19 restrictions.

Working Parties

Saturday morning Working Parties were held on;

Summer bracken cutting – Saturday June 19th

Saturday September 18th

Saturday October 16th

Saturday November 20th

Other working parties had been scheduled but were cancelled.

Nature Walks

Nature Walks were held on;

Saturday May 22nd

Saturday June 26

Saturday August 7th

Saturday September 11th

Saturday November 6th

Other nature walks had been scheduled but were cancelled.

Working Party Notes

David Rous led all the working parties.

Working Party Saturday 19/06/2021

Because of Covid-19 restrictions this was the first working party it was possible to hold this year. Number of workers = 8 including David Rous, team leader and Nick Shearme who cleared a lot of the bracken on part of compartment 10 with a strimmer.

Work done;

Bracken cutting and pulling on slope in compartment 10.



Before A



Before B



Before C



Starting Work



After A



After B



After C



Strimmed Area



*Strimmed Area and
Closing Discussion*

Working Party Saturday 18/09/2021
Notes and photographs by Juliet Bullimore.

The weather was good for the Work Party - there were 7 workers + David + me doing the refreshments.

Gorse clearance on main path through Compartment 14.



Getting started



At work



Refreshments



Job done

Working Party Saturday 16/10/2021

Number of workers = 9 including David Rous, team leader.

Work done – clearing mainly gorse but some silver birch.

Area worked = To the right of the main path leading from close to the concrete pad through Compartment 14.

Pam and Alan Hargreaves did refreshments.



Getting started A



Getting Started B



Getting Started C



Tidying up A



Tidying up B



Tidying up C



After A



After B



After C

Working Party Saturday 20/11/2021

Number of workers = 15 including David Rous, team leader and Nick Shearme, chair of advisory group.

Area worked - Both sides of path in compartment 15 below Ralph's Mill.

Work done – clear gorse and silver birch.

Nick also cleared the main access foot path to the common from the Mill Street car parking area and cleared the overgrown path leading from the left of this main access path.

Pam and Alan Hargreaves did refreshments.



Before A



Before B



Before C



After A



After B



After C



Cut material



Overgrown path



Overgrown path – clearing



Overgrown path - cleared

Nature Walks and Other Observations

Nature Walks

The Covid-19 restrictions also meant that the usual programme of Saturday morning Nature Walks had to be curtailed. *The following notes were prepared by Juliet Bullimore.*

Natural History on Westleton Common

Nature Walks took place on the Common from May onwards after restrictions, imposed as a result of the Covid-19 pandemic, were lifted.

Meantime, many observations were made during the preceding months, as can be seen by photos taken during this period.

Observations January - April 2021

JANUARY

Due to the wet weather during the winter mosses, algae and fungi put on a good show:



Bright green moss on the North Common



Nostoc - a cyanobacterium not an alga, with moss on the concrete square



*Birch Polyfore on Silver Birch
from above*



..... and below



Ear Fungus on Elder

FEBRUARY

Early in this month the snow arrived:



Gorse in bloom weighed down by snow



Sledging on the snowy sand slope



A Silver birch tree looking as if it was wearing a tutu!

MARCH



Badger setts below the Noddle

The pond on the North Common was still full, daffodils flourished amongst the trees



.....and there was more to see;



Turkey Tail fungus on gorse



Polytrichum moss with male flowers

APRIL

The weather was mainly dry this month which exacerbated the effect that the February snow had on the gorse on the Common, however the Blackthorn gave a good show :



Blackthorn in bloom on the southwest side of the Common

NATURE WALKS and Observations May - November 2021

In early May, as a result of the severe weather in February and a dry April, most of the gorse on the Common looked dead and brown. It did recover as the year progressed, but missed its main flowering period.



In contrast, towards the end of May, there were plenty of bright red Sheep's Sorrel flowers in evidence, and in one place mixed with Changing Forget-me-nots (so called because the flowers open with a yellow colour which changes to blue as it matures).



NATURE WALK MAY 22nd

In spite of a cold wind and a temperature of 11°C a stalwart group of about a dozen people joined the first walk of 2021; and commented on the sad state of the gorse.



David showing us a what was believed to be a female Stag Beetle: But Neil Mahler comments that “Stag beetles have been recorded before at Westleton - but very rarely I understand. (Very rare North of the R. Deben)”.



Male Minotaur Beetle (confirmed by Neil Mahler)

24 wildflower species were noted during the walk.
(See Appendix)

Early June observations

Two tiny plants were seen near the concrete square on 4th June:



Red Sand-Spurrey (*Spergularia rubra*)



Bird's-foot (*Ornithopus perpusillus*)

On the 7th June a surprising number of the elusive Bee Orchids were observed - they had been almost absent from the Common for the previous couple of years.



Their full beauty can be seen close up:



NATURE WALK June 26th

Fine weather for this walk, which enabled us to see some Silver Studded Blue butterflies clearly visible in the browned gorse, making the most of the sunshine:



We also saw a Lackey moth caterpillar on a Bramble leaf



and a Swollen Thighed Flower beetle on a Cinquefoil flower



The Bee Orchids were still in flower but fading slightly in the hot weather.



34 wildflower species were noted (*see Appendix*).

JULY

Moth Group 7th July

Clive Ireland set up traps several times during the year, the names and numbers of species identified can be found in the Appendix. (*See Clive's report below and the appendix*).



Observations during July

Silver Studded Blue butterflies seen roosting in the evening of July 4th:

and a Cinnabar moth caterpillar on Ragwort



on July 29th:

Bell Heather came into flower a little later than usual in 2021, but looked beautiful in the evening sun in this photo taken towards the end of July:



NATURE WALK August 7th

Weather overcast & breezy but warm.
A small group assembled for the August Nature Walk:



The wildflowers and insects seen are recorded in the appendix.



Moth Mullein



Red Bartsia

This unusual colourful fungus on a gorse stump was spotted. It was not definitely identified but is possibly a type of Rosy Crust fungus.



NATURE WALK September 11th

A small group gathered for a walk on the north part of the Common - known as the 'Old Football Field' where David Rous was able to identify some of the species of bees to be found amongst the heather.





The Sweet Chestnut Tree

September 18th Moth trapping (see Appendix for list of moths identified)

This smart Canary Shouldered Thorn moth was amongst those trapped:



October Observations

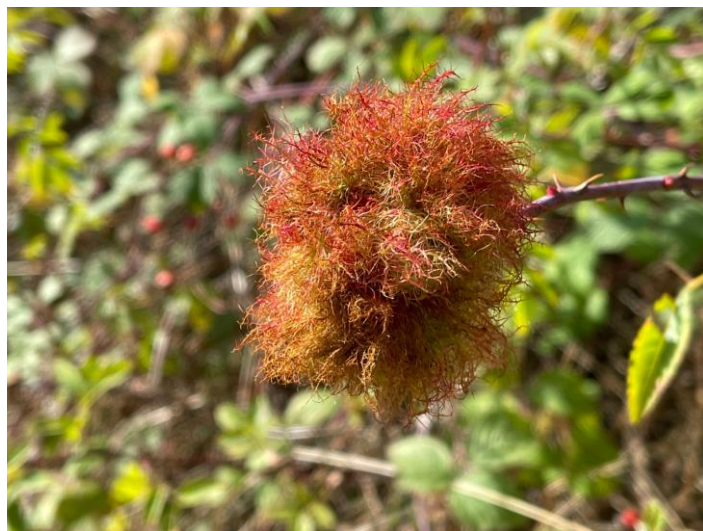
In mid-October this Garden Tiger Moth caterpillar was seen venturing across a path,



and a smart Fly Agaric mushroom appeared.



Also, in mid-October there was an unusual profusion of Robin's Pincushions on Dog Roses:
A type of Gall Wasp (*Dipoloepsis rosae*) causes the rose to create a home for the wasp larvae to develop.



NATURE WALK November 6th

“The Common Fungi Walk”; Leaders Juliet Bullimore and David Rous.



A dozen people keen on finding fungi on the Common weren't disappointed. Over 20 species of fungi were seen most of which we managed to identify. *(The list of fungi identified can be found in the Appendix.)*

These are a few of the fungi we saw on the Nature Walk:



Deceiver



Butter Cap



Mycena Pura

Additional pictures from Ann Bebbington



.....12 people plus 1 dog



Bracket Fungi



Identifying unknown fungus



Examining a possible Turkey Tail fungus



Common Earth Ball

A few days later in November these were spotted on the Common:



Shaggy Parasol



Amethyst Deceiver



Oyster

DECEMBER

After a brief snowfall at the beginning of the month, rainy weather returned; however the rusty coloured bracken brightens up dull days:



Nestling in a bed of Polytrichum moss, this Dog Lichen - *Peltigera membranacea* - has appreciated the wet weather and, unusually, produced its reddish-brown fruit bodies:



Juliet Bullimore

DASH Astro



DASH Astro has a good relationship with the Common at Westleton. With the aid of the Parish Council, we were able to get the “Hard Standing” area of the common designated as a “Dark Sky Discovery Site” which recognised the unique qualities for observing the night skies.

DASH Astro over the past few years have had many enjoyable observing sessions, with both club members and the public, that happen to come across us, while we are observing.

The night skies are best viewed when the skies are free of cloud and there is no moon. Those with good eyesight will be able to see the odd Nebular, (Orion’s Nebular during the winter months,), as well as the Andromeda Galaxy and the Great Double Cluster in Perseus. With the aid of Binoculars these objects just pop in to sight with even better clarity. Take it a step further and use a telescope and the skies come alive with faint galaxies and nebular many millions of light years away.

Although we are now based in our ancestral home of Darsham, at the village hall, Westleton common hold a very special place in the hearts of DASH members.

For more information about DASH Astro go to www.dash-astro.co.uk

Jim Slight (DASH Astro Secretary.)



Picture by Juliet Bullimore



Picture by Jim Slight

Fungi.

Report by Neil Mahler.

Suffolk County Recorder for Fungi; Suffolk Biodiversity Information Service

See appendix for detailed lists of fungi seen.



Shaggy Pholiota growing on Willow, taken just as darkness was setting in from the South Common on November 12 2021. Neil Mahler



Fly agaric; photograph by John Bebbington

Reptiles

Grass snake seen by John Shepherd 24th October 2021



Moths

(Reported by Clive Ireland)

WESTLETON COMMON MOTH GROUP

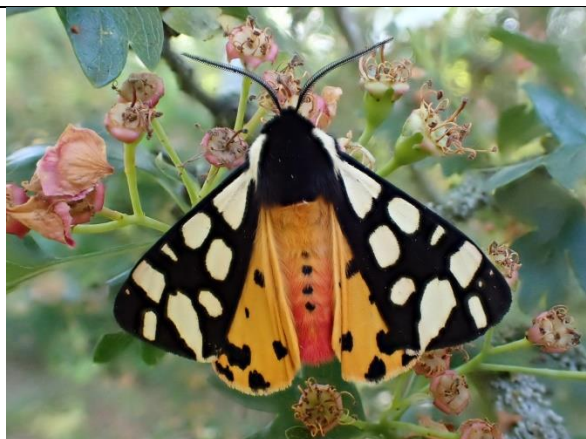
WESTLETON COMMON MOTH REPORT 2021

This year was a highly disappointing one for the moths of Westleton Common and for the Moth Group. The year began with the Covid19 lockdown preventing any early year group meetings and then, from the end of March, East Suffolk was subjected to a prolonged cold depression from the north. Temperatures plummeted to freezing in April and remained well below average throughout the spring until late May. This proved disastrous for moth populations and moth traps throughout the county were empty. Not only were moths that are normally on the wing in Spring hit hard but it also meant that the caterpillar larvae of mid-summer moths that should have been feeding up in Spring, struggled to survive due to the low temperatures and the very late leaf emergence. Consequently it was not until July that moth counts began to approach the levels expected for the time of year.

After a number of attempts to run a moth trapping session on the Common in the Spring that were cancelled due to the weather the group finally met on 9 June and then met again on 2 July and 17 September. In addition, while not strictly a Westleton Common group meeting, a moth trapping session was conducted in the churchyard of St. Peter's church in Westleton during the wild flower festival on 24 July. The records for that date are included here to ensure

they are recorded publicly. Unfortunately weather and logistical problems prevented any further meetings in the autumn.

In total 186 species were recorded on the Common which was well down on previous years but did include a number of species not previously noted. Among these the most dramatic was probably a single Red Underwing and most uncommon a Shaded Fan-foot. For keen moth folk the most exciting species was, however, the record of two Yellow-legged Clearwings that came to a chemical pheromone lure on July 19. Clearwings are small but handsome day-flying insects that are very rarely seen by chance but do readily visit pheromone lures and the availability of such lures in recent years has now allowed these insects to be monitored. Consequently Clearwings are proving to be much more common and widespread than anyone realized previously. It is intended that some more systematic searches for Clearwings on the Common will be carried out next year.



CREAM-SPOTTED TIGER



RED UNDERWING



YELLOW-LEGGED CLEARWING



FROSTED ORANGE

Westleton Common Advisory Group

Safety Audit Report

Date of Audit – Saturday 28th May 2021

Auditors – David Rous, Nick Shearme and John Bebbington

Scope of Audit;

All main paths on both sides of Baker's Lane and Mill Street/Mill Road were walked. Other paths including Black Slough and the footpath leading from the North Common past Nash Barn and King's Farm as far as the cultivated fields had been walked by some members of the group within the previous few days and no problems were seen.

The area leading to and surrounding the pond on the North Common and the track leading to Reckford Road and the Reckford Road layby were examined.

Seats, handrails and steps were checked.

Findings;

In spite of recent wet weather there is a potential fire-risk and we recommend that the fire warning signs are left in place throughout the summer months.

A small amount of broken glass was found on the right side (towards Mill Street) of the path from the Noddle leading to Mill Street. (Round a tree in front of the black shed.)

It is apparent that people often park on the Reckford Road lay-by and walk along the edge of the road to access the common through the gate. The grass verge should be strimmed and widened so people, especially children, can walk on the edge rather than the road as sight lines can be poor. The lock and chain on the gate from Reckford road was not secure. This was dealt with immediately.

In compartment 14 a seat set in sand adjacent to the path overlooking Reckford Road is unstable – one of the posts needs resetting.

The beehives near the pond are very difficult to see due to overgrown birch. The warning signs on the path leading to this area should remain in place but the overgrown birch should be cleared to ensure the hives are properly visible.

Handrails and steps are sound.

No other problems were found.

Recommendations;

Ensure fire risk warning signs remain in place during the summer.

Remove broken glass from path from Noddle to Mill Street. **(Removed 01/06/2021. JB)**

Strim and clear grass verge on edge of Reckford Road leading from the lay-by to the access gate. *(see below * for later comments from Suffolk Highways)*

Secure seat in compartment 14. *(note added later – seat secured)*

Clear overgrown birch obscuring beehives. *(note added later – contractors will probably be required)*

David Rous, Nick Shearme and John Bebbington
28/05/2021

**Suffolk Highways comment that;*

“As this is a B road the verge will be cut twice during the growing season but the verge is not maintained as a surface to be walked along although there is an expectation that the verge may be used as a refuge to avoid traffic”.

We could arrange to cut this ourselves if we felt it was appropriate.

GeoSuffolk Report

GeoSuffolk County Geodiversity Sites (CGS) Condition Monitoring Form



1. Site Information			
Site Name	Westleton Common pits		
Site Type	Geology	Grid Reference	TM 444684
Date of Visit	10.10.21	Local Authority	East Suffolk DC
Surveyor	C Markham, R Markham, H Mottram, P Brinkley	Landowner	Westleton Parish Council
1:50,000 BGS Sheet no.	191	1:25,000 OS Sheet no.	231
CGS designation	Scientific	✓	Educational
		✓	Aesthetic
			Historical
			✓
Interest Features: Small exposures of 'Westleton Beds' sands and gravel (Norwich Crag Formation) within an area of old gravel pits on sparsely vegetated heathland. Closely interbedded sand and gravel (photo 3). Gravel consists of rounded, chattermarked flints up to 6cm diameter (photo 5). 'Westleton Beds' first described here with accounts by early pioneers of East Anglian Craggs (Prestwich, Whittaker). Reference: H Mottram, 'The Norwich Crag geology of the country around Westleton' in A Celebration of Suffolk Geology, 2012, Ed. R Dixon.			
Previous management and dates			
GeoSuffolk site recording visit 22.08.09; site meeting between Westleton Common committee/residents and GeoSuffolk 17.07.10; Condition Monitoring 12.01.12; Management of the exposures with SCH AONB volunteers June 2015; Interpretive panel July 2019 (photo 1).			

2. Primary Factors			
Geology feature	Are the features exposed?	Yes	If No, can they practically be re-exposed?
	Are the features being affected by the following factors?		
	Factor	Y/N	Comments
	Vegetation	Y	Brambles and gorse on the talus can make access to the exposures difficult – see photos 2 and 3.
	Scree/Mass Movement	Y	Talus (vegetated) obscures much of the former quarry face – see photo 4.
	Flooding	n/a	
	Dumping/Landfill	N	
	Quarrying/Engineering Works	N	
	Development (housing/industrial)	n/a	
	Others (please define) -	N	

3. Secondary Factors			
<i>Factors that do not directly affect the features but may need to be managed to maintain the site in desirable condition</i>			
	Factor	Y/N	Comments
	Are any of the following causing difficulties in accessing the site?		
	Physical obstacles	N	
	Permissions	N	
	Protected species/habitats	N	
	Other (please define)	N	
	Are any of the following in an undesirable condition?		
	Interpretation Boards	N	Panel in good condition.
	Benches/Fences/Gates	N	
	Earthworks	n/a	
	Other (please define)	N	
	Are there any other features of interest that should be considered?		

GeoSuffolk Report continued

	Biodiversity	Y	Heathland with rare invertebrates
	Historic Environment	Y	Associated with early work on the 'Westleton Beds' by Joseph Prestwich.
	Other (please define)	N	

Site Status – Geology	
Is the site in a desirable condition for use of all/some/none the features identified?	Yes
	Status: GOOD
If Yes - what management (if any) is required for the features to maintain a desirable condition: Recommend exposures be refreshed from time to time – as per photo 3.	
Is the management being undertaken/going to be undertaken/not going to be undertaken/not possible?	
Are there any secondary factors that need further management?	No
Suggested management in order to enhance the site status.	

Photos



Photo 1 TM 44336850 Interpretive panel produced by GeoSuffolk in 2019.



Photo 2 TM 44486848 looking south towards an exposure of sand and gravel.



Photo 3 TM 44466845 looking south at the exposure in photo 2 - showing horizontally bedded sand and gravel. This is the face that was refreshed in 2015.



Photo 4 TM 44486848 looking north towards a small exposure of sand and gravel with prominent talus.

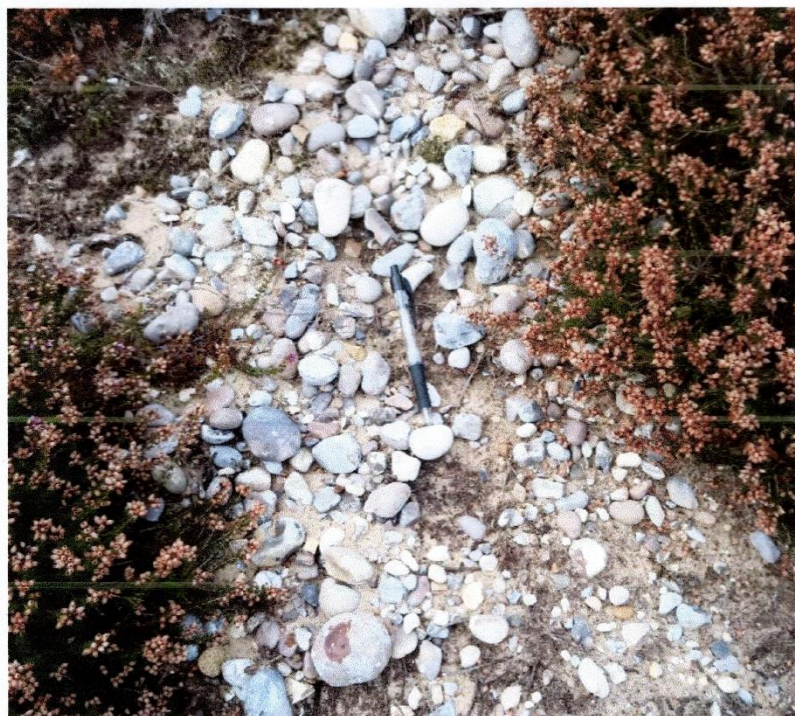
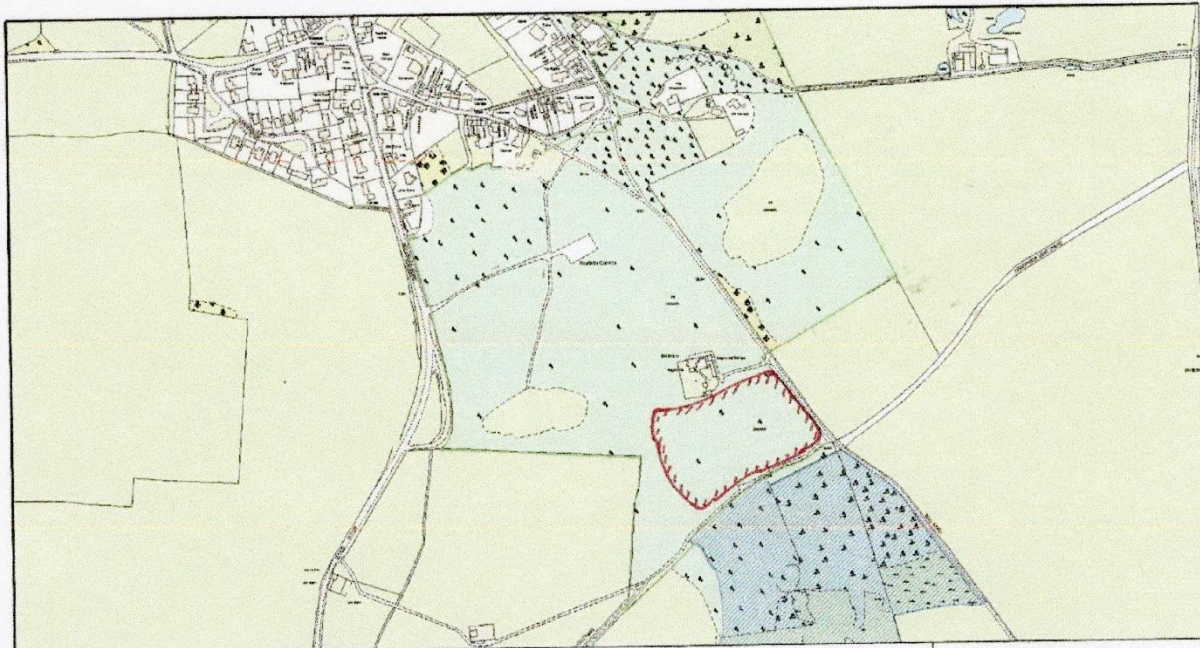


Photo 5 TM 44496849 Pebbles on the talus – note pen for scale



Westleton Common Pit
Westleton
TM444684

Scale 1:5000



© Crown Copyright. All rights reserved.
 Suffolk County Council Licence No. LA076664 2002

Map showing Westleton Common CGS in red.

APPENDIX: 2021 Records

Silver Studded Blue Butterfly counts 2021

Reported by David Rous

2 visits were made to survey Silver Studded Blue Butterflies. The best count was on 14th July 2021;

males = 108

females = 25

total of = 133

Fungi

(Reported by Neil Mahler, Suffolk County Recorder for Fungi, Suffolk Biodiversity Information Service)

North Common June 5, 2021

Exidia glandulosa - Witches Butter on Oak.
Peziza sp. - unknown species on fire site.
Bisporella citrina - Lemmon Disco on dead Oak branch
Stereum gausapatum - Bleeding Oak Crust
Stereum hirsutum - Hairy Curtain Crust on Oak
Xylaria hypoxylon - Candle Snuff on gorse.
Tremella mesenterica - Yellow Brain on gorse.
Peniophora cinerea - on gorse
P. Incarnata - Rosy Crust on gorse
P. quercina - on oak
Bjerkandera adusta - Smokey Bracket, on gorse.
Diatrype stigma - Common Tarcrust on dead branch.
Auricularia auricula-judae - Jelly ear on Elder
Psathyrella sp. - undetermined.
Rhopoglyphus filicinus - Bracken Map
Hypholoma fasciculare - Sulphur Tuft on oak.
Polyporus tuberaster - Tuberous Polypore on gorse
Dacrymyces stillatus - Common Jellyspot damp dead wood
Bysomerulius corium - dead gorse
Vuilleminia comedans - Oak Waxy Crust on dead Oak

South Common June 5, (getting dark - ran out of time!)

Stereum hirsutum - Hairy Curtain Crust
Exidia glandulosa - Witches Butter, oak
Polyporus tuberaster - Tuberous Polypore on gorse.

North Common, Oct 17, 2021. Conditions very dry.

Phacidium multivalve - Holly Leaf Spot
Trichia ilicina - Holly Speckle
Panaeolina foenesecii - Mowers Mushroom
Gymnopus dryophyllus - Common Toughshank
Gymnopus peronatus - Wood Woollyfoot

Bjerkandera adusta - Smokey Bracket
Exidia glandulosa - Witches Butter
Scleroderma citrinum - Common Earthball
S. verucosum - Scaly Earthball
Jackrogersella (Hypoxylon) multififormis - Birch Woodwort
Phellinus pomaceus - Cushion Bracket

South Common. Nov 1, 2021

Paxillus involutus - Brown Rollrim with Oak and Birch
Exidia glandulosa - Witches Butter
Peniophora incarnata - gorse
Scleroderma citrinum - Common Earthball
Laccaria laccata - Deceiver
Hygrophoropsis aurantiaca - False Chanterelle
Bjerkandera adusta - Smokey Bracket
Amanita muscaria - Fly Agaric with Birch
A. junquillia (formerly called Amanita gemmata) Jewelled Amanita (new ?)
A. rubescens - Blusher
Lycoperdon pratense - Meadow Puffball
Bovista plumbea - Lead Bovist
Laccaria amethystina - Amethyst Deceiver
Tremella mesenterica - Yellow Brain
Clitocybe nebularis - Clouded Funnel
Rhodocollybia butyracea - Buttercap on leaf litter
Clitocybe metacroa - leaf litter.
Stereum hirsutum - Hairy Curtain Crust
Mycena rosea - Rosy Bonnet
Diatrypella quercina
Peniophora quercina
Mycena pura - Lilac Bonnet
Tubaria furfuracea - Scurfy Twiglet
Hypholoma fasciculare - Sulphur Tuft
Dacrymyces stillatus - Common Jellyspot.
Calocera cornea - Small Stagshorn
Boletus edulis - Cep.

South Common Nov 12, 2021

Amanita muscaria - Fly Agaric
Daedaliopsis confragrosa - Blushing Bracket
Rhodocollybia butyracea - Buttercap
Paxillus involutus - Brown Rollrim
Laccaria laccata - Deceiver
Bjerkandera adusta - Smokey Bracket
Chondrostereum purpureum - Silver Leaf Disease
Tremella mesenterica - Yellow Brain
Cystoderma amianthinum - Earthy Powdercap
Flammulina velutipes - Velvet Shank
Clitocybe metacroa
Ampuloclitocybe clavipes - Club foot

Pholiota squarrosa - Shaggy Pholiota amongst the willow scrub (Photo sent previously)
Ascocoryne sarcoides - Purple Jellydisc
Xylaria hypoxylon - Candlesnuff
Clitocybe phyllophila - Frosty Funnel

Additional note from Neil Mahler

2021 started off quite late I thought but this was compensated for with a season that extended right to the end of the year.

Additional Fungi Reports

Westleton Common Fungi List 2021

<u>Common name</u>	<u>Latin name</u>
Fly Agaric	<i>Amanita muscaria</i>
Butter Cap	<i>Collybia butyracea</i>
Mycena Pura	<i>Mycena Pura</i>
Candle Snuff	<i>Xylaria hypoxicon</i>
Little Stag Horn	<i>Calocera cornea</i>
Fairy Club	<i>Clavaria sp.</i>
Sulphur tuft	<i>Hypholoma fasciculare</i>
Birch Polypore	<i>Piptosporus betulinus</i>
Ear Fungus	<i>Auricularia auricula-judae</i>
Oyster	<i>Pleurotus ostreatus</i>
Roll Rim	<i>Paxillus involutus</i>
Brain Fungus	<i>Tremella mesenterica</i>
Deceiver	<i>Laccaria laccata</i>
Turkey Tail	<i>Trametes versicolour</i>
Crepidotus	<i>Crepidotus sp.</i>
Common Earthball	<i>Scleroderma citrinum</i>
Amethyst Deceiver	<i>Laccaria amethystina</i>
Parasol	<i>Macrolepiota procera</i>

Sheila Francis and Juliet Bullimore, December 2021

Moths 2021

(Report by Clive Ireland – Westleton Moth Group)

UK MOTHS RECORDS 2021

				09-Jun	02-Jul	17-Sep	24-Jul
Taxonomic No.	Old check-list No.	Scientific name	Common name	WESTLETON COMMON	WESTLETON COMMON	WESTLETON COMMON	WESTLETON CHURCHYD
			Weather	0% 12°C SW1-2	100% cloud dry humid 14°C 2-3N	70% dry 14°C calm	
		MACRO MOTHS					
			Traps	2 MV 2LED	2 150W MV 1 wem 1 LED	2 150W MV 1 2x30W act 1 Wem	1 150W MV
		Hepialidae (Swift moths)					
3.002	17	<i>Korscheltellus lupulina</i>	COMMON SWIFT	2			
		Cossidae (Leopard and goat moths)					
50.002	161	<i>Zeuzera pyrina</i>	LEOPARD MOTH				1
		Sesiidae (Clearwing moths)					
52.012	374	<i>*Synanthedon vespiformis</i>	YELLOW-LEGGED CLEARWING				
		*2 came to pheromone lure on Westleton Common 19/7					
		Drepanidae (Hook-tips and lutestrings)					
65.005	1648	<i>Drepana falcatoria</i>	PEBBLE HOOK-TIP	2	1		1
65.007	1651	<i>Cillix glaucata</i>	CHINESE CHARACTER	1			
		Lasiocampidae (Eggar and lappet moths)					
66.003	1634	<i>Malacosoma neutria</i>	LACKEY				5
66.008	1638	<i>Macrothylacia rubi</i>	FOX MOTH		2		
		Sphingidae (Hawk-moths)					
69.002	1980	<i>Smerinthus ocellata</i>	EYED HAWKMOTH	1	2		
69.003	1981	<i>Laotloe populi</i>	POPLAR HAWKMOTH	2	1		2
69.007	1978	<i>Sphinx pinastri</i>	PINE HAWKMOTH	1	1		
69.016	1991	<i>Deilephila elpenor</i>	ELEPHANT HAWKMOTH		6		5
		Geometridae					
		Geometridae - Sterrhinae (Mochas & waves)					
70.004	1699	<i>Idaea rusticata</i>	LEAST CARPET				2
70.006	1705	<i>Idaea fuscovenosa</i>	DWARF CREAM WAVE		1		1
70.008	1707	<i>Idaea seriata</i>	SMALL DUSTY WAVE		1		
70.009	1709	<i>Idaea subsericeata</i>	SATIN WAVE	1			
70.012	1711	<i>Idaea trigeminata</i>	TREBLE BROWN SPOT	6	3		1
70.016	1713	<i>Idaea aversata</i>	RIBAND WAVE		1		2
70.029	1682	<i>Timandra comae</i>	BLOOD-VEIN				2
70.036	1680	<i>Cyclophora punctaria</i>	MAIDEN'S BLUSH	3			
		Geometridae - Larentinae (Carpets, pugs & allies)					

70.045	1732	<i>Scotopteryx chenopodiata</i>	SHADED BROAD-BAR				1
70.049	1728	<i>Xanthorhae fluctuata</i>	GARDEN CARPET	1			
70.054	1727	<i>Xanthorhae montonata</i>	SILVER-GROUND CARPET	2			
70.061	1738	<i>Epirrhoe alternata</i>	COMMON CARPET		1		2
70.070	1745	<i>Larentia clavaria</i>	MALLOW			1	
70.077	1767	<i>Pennithera firmata</i>	PINE CARPET			1	
70.081	1768	<i>Thera obeliscata</i>	GREY PINE CARPET	1			
70.085	1765	<i>Cidaria fulvata</i>	BARRED YELLOW		2		
70.094	1759	<i>Ecliptopera silaceata</i>	SMALL PHOENIX	1			1
70.095	1760	<i>Chloroclysta siterata</i>	RED-GREEN CARPET	1			
70.097	1764	<i>Dysstroma truncata</i>	COMMON MARBLED CARPET	1		5	
70.100	1776	<i>Colostygia pectinataria</i>	GREEN CARPET	7		1	
70.121	1789	<i>Rheumaptera undlata</i>	SCALLOP SHELL		1		
70.138	1808	<i>Perizoma flavofasciata</i>	SANDY CARPET		1		
70.141	1862	<i>Gymnoscelis rufifasciata</i>	DOUBLE-STRIPED PUG		1		
70.144	1860	<i>Pasiphila rectangulata</i>	GREEN PUG		1		
70.151	1817	<i>Eupithecia pulchellata</i>	FOXGLOVE PUG	1	1		1
70.168	1846	<i>Eupithecia nanata</i>	NARROW-WINGED PUG	3			
70.183	1834	<i>Eupithecia vulgata</i>	COMMON PUG	1			
70.184	1819	<i>Eupithecia exiguata</i>	MOTTLED PUG	6			
70.198	1879	<i>Lobophora halterata</i>	SERAPHIM	1			
70.200	1883	<i>Acasis viretata</i>	YELLOW-BARRED BRINDLE	1		1	
		Geometridae - Ennominae (Thorns, beauties, umbers & allies)					
70.207	1887	<i>Lomaspilis marginata</i>	CLOUDED BORDER		1		
70.208	1888	<i>Ligdia adustata</i>	SCORCHED CARPET	1			
70.211	1889	<i>Macaria notata</i>	PEACOCK MOTH	2	3		
70.218	1894	<i>Chiasmia clathrata</i>	LATTICED HEATH				2
70.222	1902	<i>Petrophora chlorosata</i>	BROWN SILVER-LINE	30	10		
70.224	1904	<i>Plagiods dolabraria</i>	SCORCHED WING	2			
70.226	1906	<i>Opisthagraptis luteolata</i>	BRIMSTONE MOTH	2		4	1
70.230	1924	<i>Angerona prunaria</i>	ORANGE MOTH				1
70.234	1913	<i>Ennomos alniraria</i>	CANARY-SHOULDERED THORN			1	2
70.235	1914	<i>Ennomos fuscantaria</i>	DUSKY THORN			1	
70.239	1919	<i>Selenia tetralunaria</i>	PURPLE THORN				1
70.241	1921	<i>Crocallis elinguaris</i>	SCALLOPED OAK				1
70.243	1922	<i>Ourapteryx samucaria</i>	SWALLOW-TAILED MOTH		2		2
70.252	1931	<i>Biston betularia</i>	PEPPERED MOTH		8		5
70.257	1936	<i>Menophra abruptaria</i>	WAVED UMBER				1
70.258	1937	<i>Peribatodes rhomboidaria</i>	WILLOW BEAUTY			2	
70.265	1941	<i>Alcis rependata</i>	MOTTLED BEAUTY		10		
70.268	1944	<i>Hypomecis punctinalis</i>	PALE OAK BEAUTY	2			
70.270	1947	<i>Ectropis crepuscularia</i>	ENGRAILED			1	1
70.277	1955	<i>Cabera pusaria</i>	COMMON WHITE WAVE	1			
70.278	1956	<i>Cabera exanthemata</i>	COMMON WAVE		2		
70.280	1958	<i>Lomographa temerata</i>	CLOUDED SILVER		2		2
70.283	1961	<i>Campaea margaritata</i>	LIGHT EMERALD	3		5	
		Geometridae - Geometrinae (Emeralds)					
70.300	1667	<i>Comibaenia bajularia</i>	BLOTCHED EMERALD		15		

		Notodontidae - Notodontinae (Prominents, kitten & processionary moths)					
71.009	1999	<i>Stauropus fagi</i>	LOBSTER MOTH		1		
71.010	2014	<i>Drymonia dodonaea</i>	MARbled BROWN	5	2		
71.012	2000	<i>Notodonta dromedarius</i>	IRON PROMINENT				1
71.025	1994	<i>Phalera bucephala</i>	BUFF-TIP	5	7		2
		Erebidae					
		Erebidae - Rivulinae					
72.002	2474	<i>Rivula sericealis</i>	STRAW DOT		1	1	
		Erebidae - Hypeninae (Snouts)					
72.003	2477	<i>Hypena proboscidalis</i>	SNOUT		1	8	
		Erebidae - Lymantriinae (Tussocks)					
72.009	2031	<i>Leucoma salicis</i>	WHITE SATIN MOTH				1
72.010	2033	<i>Lymantria monacha</i>	BLACK ARCHES				2
72.015	2028	<i>Calliteara pudibunda</i>	PALE TUSsock	3			
		Erebidae - Arctiinae (Tiger, ermine & footman moths)					
72.019	2061	<i>Spilosoma luteum</i>	BUFF ERMINE	1	2		2
72.020	2060	<i>Spilosoma lubricipeda</i>	WHITE ERMINE	2	1		
72.026	2057	<i>Arctia caja</i>	GARDEN TIGER				1
72.027	2058	<i>Arctia villica</i>	CREAM-SPOT TIGER	9			
72.035	2037	<i>Mitochrista miniata</i>	ROSY FOOTMAN		3		10
72.036	2038	<i>Nudaria mundana</i>	MUSLIN FOOTMAN				1
72.038	2040	<i>Cybosia mesomella</i>	FOUR-DOTTED FOOTMAN		1		
72.043	2049	<i>Eilema depressa</i>	BUFF FOOTMAN				2
72.045	2050	<i>Eilema lurideola</i>	COMMON FOOTMAN			1	50
72.046	2047	<i>Eilema complana</i>	SCARCE FOOTMAN				20
72.049	2043	<i>Eilema sororcula</i>	ORANGE FOOTMAN	17			
		Erebidae - Herminiinae (Fan-foots)					
72.053	2489	<i>Hermia tarsipennalis</i>	FAN-FOOT		1		
72.054	2491	<i>Hermia tarsicrinalis</i>	SHADED FAN- FOOT		1		
		Erebidae - Boletobiinae (Marbleds)					
72.069	2473	<i>Laspeyria flexula</i>	BEAUTIFUL HOOK- TIP		3		2
		Erebidae - Erebininae (Underwings)					
72.078	2452	<i>Catocala nupta</i>	RED UNDERWING			1	
		Noctuidae					
		Noctuidae - Plusinae (Silver and golden Ys, gems, brasses & allies)					
73.001	2450	<i>Abrostola tripartita</i>	SPECTACLE		1		
73.012	2434	<i>Diachrysia chrysitis</i>	BURNISHED BRASS			3	1
		Noctuidae - Acronictinae (Daggers)					
73.037 / 38	2283/84	<i>Acronicta tridens / psi</i>	GREY DAGGER agg.		2		3
73.039	2279	<i>Acronicta aceris</i>	SYCAMORE		1		1
73.040	2280	<i>Acronicta leporina</i>	MILLER				1
73.046	2278	<i>Subacronicta megacephala</i>	POPLAR GREY		1		2
73.047	2291	<i>Craniophora ligustri</i>	CORONET				1
		Noctuidae - Xyleninae (Rustics, wainscots,					

		sallows, chestnuts & allies)					
73.092	2387	<i>Caradrina morpheus</i>	MOTTLED RUSTIC	1	8		2
73.095	2389	<i>Paradrina clavipalpis</i>	PALE MOTTLED WILLOW	1			
73.096	2381	<i>Hoplodrina octogenaria</i>	UNCERTAIN		8		5
73.097	2382	<i>Hoplodrina blanda</i>	RUSTIC		6		
73.099	2384	<i>Hoplodrina ambigua</i>	VINE'S RUSTIC			6	
73.100	2391	<i>Chilodes maritimus</i>	SILKY WAINSCOT				1
73.101	2380	<i>Charanyca trigrammica</i>	TREBLE LINES	46	2		
73.102	2302	<i>Rusina ferruginea</i>	BROWN RUSTIC	12	10		
73.105	2301	<i>Dypterygia scabriuscula</i>	BIRD'S WING		1		
73.113	2306	<i>Phlogophora meticulosa</i>	ANGLE SHADES			2	
73.114	2305	<i>Euplexia lucipara</i>	SMALL ANGLE SHADES				1
73.120	2352	<i>Eremobia ochroleuca</i>	DUSKY SALLOW				2
73.121	2364	<i>Gortyna flavago</i>	FROSTED ORANGE			2	
73.131	2353	<i>Luperina testacea</i>	FLOUNCED RUSTIC			13	
73.137	2377	<i>Arenostola phragmitidis</i>	FEN WAINSCOT				2
73.158	2334	<i>Apammea sordens</i>	RUSTIC SHOULDER-KNOT	3			
73.162	2321	<i>Apammea monoglypha</i>	DARK ARCHES		5		2
73.169 / 70	2343 / 44	<i>Mesapamea secalis / didyma</i>	COMMON / LESSER COMMON RUSTIC				5
73.173 /74 /75	2337 /38 /39	<i>Oligia</i> sp.	MARBLED MINOR ag.	3	1		2
73.219	2269	<i>Atethmia centrargo</i>	CENTRE-BARRED SALLOW			1	
73.225	2248	<i>Dryobotodes eremita</i>	BRINDLED GREEN			1	
73.233	2232	<i>Aporophyla nigra</i>	BLACK RUSTIC			3	
		Noctuidae - Hadeninae (Brocades, quakers, leaf-eating wainscots)					
73.252	2177	<i>Tholea cespitis</i>	HEDGE RUSTIC			3	
73.261	2150	<i>Polia nebulosa</i>	GREY ARCHES		1		
73.263	2157	<i>Lacanobia w-latinum</i>	LIGHT BROCADE	16			
73.267	2160	<i>Lacanobia oleracea</i>	BRIGHT-LINE BROWN-EYE	1	3	1	
73.270	2155	<i>Melanchra persicariae</i>	DOT MOTH				1
73.273	2147	<i>Hada plebeja</i>	SHEARS	6	2		
73.279	2164	<i>Hecatera bicolorata</i>	BROAD-BARRED WHITE		1		
73.290	2192	<i>Mythimna conigera</i>	BROWN-LINE BRIGHT-EYE				3
73.291	2199	<i>Mythimna pallens</i>	COMMON WAINSCOT	3		14	
73.293	2198	<i>Mythimna impura</i>	SMOKY WAINSCOT		1		5
73.298	2193	<i>Mythimna ferrago</i>	CLAY				1
73.301	2205	<i>Mythimna comma</i>	SHOULDER-STRIPED WAINSCOT	1			
		Noctuidae - Noctuinae (Darts, yellow underwings, clays & allies)					
73.317	2089	<i>Agrotis exclamationis</i>	HEART AND DART	4	2		
73.319	2087	<i>Agrotis segetum</i>	TURNIP MOTH	7	2	1	1
73.320	2088	<i>Agrotis clavis</i>	HEART AND CLUB		6		
73.325	2092	<i>Agrotis puta</i>	SHUTTLE-SHAPED DART	2			2
73.327	2091	<i>Agrotis ipsilon</i>	DARK SWORD-GRASS			1	
73.328	2098	<i>Axyia putris</i>	FLAME		3		
73.333	2120	<i>Diarsia mendica</i>	INGRAILED CLAY		1		
73.334	2123	<i>Diarsia rubi</i>	SMALL SQUARE-SPOT			1	
73.338	2118	<i>Lycophotia porphyrea</i>	TRUE LOVER'S KNOT	3	9		10

73.342	2107	<i>Noctua pronuba</i>	LARGE YELLOW UNDERWING		8	29	
73.343	2110	<i>Noctua fimbriata</i>	BROAD-BORDERED YELLOW UNDWNG		1	5	
73.344	2108	<i>Noctua orbona</i>	LUNAR YELLOW UNDERWING	1	2	11	
73.345	2109	<i>Noctua comes</i>	LESSER YELLOW UNDERWING			3	
73.356	2135	<i>Xestia agathina</i>	HEATH RUSTIC			20	
73.357	2134	<i>Xestia xanthographa</i>	SQUARE-SPOT RUSTIC			19	
73.359	2126	<i>Xestia c-nigrum</i>	SETACEOUS HEBREW CHARACTER		2	45	
73.361	2128	<i>Xestia triangulum</i>	DOUBLE SQUARE-SPOT		3		
73.365	2117	<i>Eugnorisma glareosa</i>	AUTUMNAL RUSTIC			15	
		Nolidae					
73.002	2076	<i>Meganola albula</i>	KENT BLACK ARCHES				3
73.003	2077	<i>Nola cucullatella</i>	SHORT-CLOAKED MOTH		1		2
73.004	2078	<i>Nola confusalis</i>	LEAST BLACK ARCHES	1			
73.008	2422	<i>Pseudops prasinana</i>	GREEN SILVER-LINES		1		
		MICRO MOTHS					
		Opostegidae					
5.001	119	<i>Opostega salaciella</i>				1	
		Tischeriidae					
10.003	125	<i>Coptotriche marginea</i>			1		
		Psychidae (Bagworms)					
11.006	181	<i>Taleporia tubulose</i>			2		
		Tineidae					
12.032	246	<i>Tinea semifulvella</i>		1	1		
12.033	247	<i>Tinea trinotella</i>		1			
		Gracillariidae					
15.040	321	<i>Phyllonorycter messaniella</i>				1	
		Yponomeutidae					
16.001	424	<i>Yponomeuta evonymella</i>	BIRD-CHERRY ERMINE				200
16.002 / 3 / 4	425 / 6 / 7	<i>Yponomeuta</i> sp.	ORCHARD / APPLE / SPINDLE ERMINE				10
		Plutellidae					
18.001	464	<i>Plutella xylostella</i>	DIAMOND-BACK MOTH				2
		Argyresthiidae					
20.012	411	<i>Argyresthia goedartella</i>				1	
20.018	417	<i>Argyresthia spinosella</i>			1		
20.021	420	<i>Argyresthia pruniella</i>	CHERRY FRUIT MOTH	2			
		Oecophoridae					
28.014	642	<i>Crassa unitella</i>					1

		Gelechiidae					
35.143	774	<i>Teleiodes luculella</i>		3			
35.146	776	<i>Teleiopsis diffinis</i>		13			
		Coleophoridae					
37.063	544	<i>Coleophora albicosta</i>		2			
		Blastobasidae					
41.002	873	<i>Blastobasis adustella</i>				4	
41.003	874	<i>Blastobasis lacticolella</i>		9	3		
		Tortricidae					
49.004	1010	<i>Ditula angustiorana</i>	RED-BARRED TORTRIX		1		
49.013	977	<i>Archips podana</i>	LARGE FRUIT- TREE TORTRIX		2	2	
49.015	980	<i>Archips xylosteana</i>	VARIEGATED GOLDEN TORTRIX		5	1	
49.025	970	<i>Pandemis cerasana</i>	BARRED FRUIT- TREE TORTRIX		5		
49.028	986	<i>Syndemis musculana</i>		1			
49.039	998	<i>Epiphyas postvittana</i>	LIGHT-BROWN APPLE MOTH			2	
49.040	1001	<i>Lozotaeniodes formosanus</i>					1
49.049 / 057	1020 / 24	<i>Cnephasia sp.</i>	GREY TORTRIX sp.		1		
49.059	1033	<i>Tortrix viridana</i>	GREEN OAK TORTRIX		25		
49.060	1032	<i>Aleimma loeflingiana</i>			15		
49.077	1048	<i>Acleris variegana</i>	GARDEN ROSE TORTRIX			2	
49.084	1045	<i>Acleris notana</i>			1		
49.090	1015	<i>Eulia ministrana</i>		3			
49.123	951	<i>Aethes beatricella</i>			2		
49.139	966	<i>Cochylis atricapitana</i>		1			1
49.156	1083	<i>Hedya nubiferana</i>	MARbled ORCHARD TORTRIX		1		
49.157	1082	<i>Hedya pruniana</i>	PLUM TORTRIX		1		
49.161	1063	<i>Celypha striana</i>			2		
49.166	1076	<i>Celypha lacunana</i>		3	3	2	
49.240	1136	<i>Epinotia immundana</i>		1			
49.254	1133	<i>Epinotia bilunana</i>			1		
49.260	1165	<i>Zeiraphera isertana</i>			3		
49.265	1201	<i>Eucosma cana</i>			1		
49.275	1192	<i>Eucosma conterminiana</i>					2
49.292	1174	<i>Notocelia cynosbatella</i>		1			
49.294	1175	<i>Notocelia uddmanniana</i>	BRAMBLE SHOOT MOTH	1	1		
49.297 / 298	1176 / 77	<i>Notocelia trimaculana</i>		1			
49.325	1255	<i>Cydia ulicetana</i>		2			
49.338	1261	<i>Cydia pomonella</i>	CODLING MOTH		2		
49.357	1247	<i>Grapholita funebrana</i>	PLUM FRUIT MOTH	2		1	
49.366	1225	<i>Pammene obscurana</i>		1			
49.376	1233	<i>Pammene aurita</i>					1
		Pyalidae					
62.001	1428	<i>Aphomia sociella</i>	BEE MOTH	3			
62.023	1442	<i>Pempelia palumbella</i>		3	5		
62.029	1452	<i>Phycita roborella</i>				3	
62.055	1481	<i>Homoeosoma sinuella</i>			3		
62.070	1414	<i>Synaphe punctalis</i>					5
62.077	1424	<i>Endotricha flammealis</i>					5

62.720	1417	<i>Pyralis farinalis</i>	MEAL MOTH				1
		Crambidae					
63.005	1365	<i>Pyrausta despicata</i>			2		2
63.018	1378	<i>Anania coronata</i>			1		
63.025	1376	<i>Anania hortulata</i>	SMALL MAGPIE		3		
63.028	1375	<i>Ostrinia nubilalis</i>	EUROPEAN CORN BORER		1		
63.038	1405	<i>Pleuroptya ruralis</i>	MOTHER OF PEARL				5
63.067	1338	<i>Eudonia lacustrata</i>			1		
63.069	1342	<i>Eudonia angustea</i>				5	
63.074	1344	<i>Eudonia mercurella</i>					1
63.075	1336	<i>Eudonia pallida</i>					1
63.080	1293	<i>Chrysoteuchia culmella</i>	GARDEN GRASS VENEER		2		50
63.081	1294	<i>Crambus pascuella</i>			1		
63.086	1301	<i>Crambus lathoniellus</i>		2	3		
63.088	1302	<i>Crambus perlella</i>			1		
63.099	1313	<i>Catoptria pinella</i>					1
63.102	1316	<i>Catoptria falsella</i>					1
63.109	1323	<i>Pediasia contaminella</i>			1		
63.111	1326	<i>Platytes cerussella</i>			6		
63.115	1331	<i>Acentria ephemerella</i>	WATER VENEER	1			
63.116	1354	<i>Cataclysta lemnata</i>	SMALL CHINA-MARK		1		
63.117	1348	<i>Parapoynx stratiotata</i>	RINGED CHINA-MARK	3	1		2
63.120	1328	<i>Schoenobius gigantella</i>			1		
		<i>Total</i>		77	107	49	80
				Total sp. 186			

Reptiles 2021

(Reported by David Rous)

Adders

March 2021

South Slope; 3 males

Noddle Slope; 2 males 1 female,

North Common "old football pitch"; 1 male 1 female.

April 2021

Adders seen in the same places as in March

Addition comment by David Rous on 9th March 2021; *"Adders are out on the common saw 2 today."*

Insects 2021

(Reported by David Rous)

Seen during Nature Walk on 7 August 2021

Butterflies

Gatekeepers - many

Grayling

Green veined White

Small Heath

Bees

White-tailed Bumble bee

Red-tailed "

Carder bee

Hairy footed Flower bee

1 Darter Dragonfly

Insect Summary – During the year all common bee species were seen plus, as a bonus, we had ivy bee, ashy mining bee, yellow legged mining bee, box headed blood bee, pantaloone bee, large sharp tailed bee, green eyed flower bee.

Birds 2021

(Reported by Richard Drew)

Breeding bird records for the Common and the Gun Club 2021.

Most interesting was a pair of Nightjar that were present all summer.

Other records were,

1 pair Woodlark.

7 Singing nightingale.

4 Singing Yellowhammer.

2 Singing Lesser Whitethroat.

3 Singing Garden Warbler.

A pair of Little Owl and a pair of Bullfinch.

There was no sign of last year's Dartford Warblers, probably due to the cold weather.

Joyce Burtenshaw has also reported hearing and seeing nightjars and stone curlews.

Wildflowers and other plants 2021

(Reported by Juliet Bullimore and Joyce Burtenshaw)

Wildflower List 22/05/21

Cold wind 11C

(Juliet Bullimore)

Green Alkanet	<i>Pentaglottis sempivirens</i>
Biting stonecrop	<i>Sedum acer</i>
Bluebell	<i>Hyacinthoides non-scripta</i>
Bulbous buttercup	<i>Ranunculus bulbosus</i>
Changing Forget-me-not	<i>Mysotis discolor</i>
Climbing Corydalis	<i>Ceratocarpus claviculata</i>
Comfrey	<i>Symphytum officinale</i>
Common Storksbill	<i>Erodium cicutarium</i>
Field/ Heath woodrush	<i>Luzula campestris(or multiflora)</i>
Greater Celandine	<i>Chelidonium majus</i>
Heath Groundsel	<i>Seneciosylvaticus</i>
Hedgerow Cranesbill	<i>Geranium pyrenaicum</i>
Hemlock	<i>Conium maculatum</i>
Lesser Trefoil	<i>Trifolium dubium</i>
Mossy Stonecrop	<i>Crassula Tillaea</i>
Parsley Piert	<i>Aphanes arvensis</i>
Red Dead Nettle	<i>Lamium purpureum</i>
Sheep Sorrel	<i>Rumex acetosella</i>
Small flowered cranesbill	<i>Geranium pusillum</i>
Spotted Medick	<i>Medicago arabica</i>
Stinging Nettle	<i>Urtica dioica</i>
Three Nerved Sandwort	<i>Moehringia trinervia</i>
White Dead Nettle	<i>Lamium album</i>
White Stonecrop	<i>Sedum album</i>

List compiled by Joyce Burtenshaw

Wildflower List 26/06/21

Bee Orchid	Hedgerow Cranesbill
Bell Heather	Hoary Cinquefoil
Birds-foot Trefoil	Honeysuckle
Biting Stonecrop	Hop Trefoil
Black Horehound	Lady's Bedstraw
Climbing Corydalis	Lesser Trefoil
Common Cudweed	Moth Mullein
Common Mouse-ear	Perforated St. John's Wort
Common Storksbill	Sheep's Sorrel
Creeping Cinquefoil	Slender Thistle
Dog Rose	Small-flowered Cranesbill
Foxgloves	Smooth Hawksbeard
Germander Speedwell	Spotted Medick
Green Alkanet	Sweet Briar
Heath Bedstraw	Wall Pennywort
Heath Groundsel	Weld
Hedgerow Bedstraw	White Stonecrop

Wildflower List 7/08/21

Bell Heather
Black horehound
Bracken
Buckshorn plaintain
Common Storksbill
Corn mint
Dark Mullein
Evening Primrose
Heath Bedstraw
Honeysuckle
Ling
Moth mullein
Mugwort
Red Bartsia
Scarlet Pimpernel
Self Heal
Soapwort
White Campion
Wild Origano

*Westleton Common Advisory Group
January 2022*

Post-Publication note

In the report of the Nature Walk of August 7th 2021 is a note of;

“This unusual colourful fungus on a gorse stump was spotted. It was not definitely identified but is possibly a type of Rosy Crust fungus.”



Neil Mahler, Suffolk County Recorder for Fungi; Suffolk Biodiversity Information Service has looked into this fungus and established that;

*The so-called Rosy Crust is a crust fungus called *Byssomerulius corium* (Netted Crust) which is fairly common on Gorse in Coastal Suffolk, but not the odd occasion when the hymenium (fertile layer) turns a red rusty colour which it apparently does occasionally but very little is written about it.*

As the saying goes ... “Not a lot of people know that” !